

**SARNAFIL® TPO - GREEN ROOF SYSTEM - INTENSIVE
ON CONCRETE DECK WITH THERMAL INSULATION
TECHNICAL DETAILS SF TPO – 051.**

SARNAFIL® TPO - GREEN ROOF SYSTEM - INTENSIVE ON CONCRETE DECK WITH THERMAL INSULATION

NUMBERING OF DETAILS

SF TPO - 051.00.01

Membrane Technologies

SF TPO -	Sarnafil® TPO
SF PVC -	Sarnafil® PVC
SPL TPO -	Sikaplan® TPO
SPL PVC -	Sikaplan® PVC
SB T -	SikaBit® T

Roofing Systems

001.	Mechanically Fastened Roof System on Metal Deck with Thermal Insulation
002.	Mechanically Fastened Roof System on Wood Deck with Thermal Insulation
003.	Mechanically Fastened Roof System on Concrete Deck with Thermal Insulation
004.	Mechanically Fastened Roof System on Wood Deck without Thermal Insulation
005.	Mechanically Fastened Roof System on Concrete Deck without Thermal Insulation
020.	Gravel Ballasted Roof System on Concrete Deck with Thermal Insulation
021.	Gravel Ballasted Roof System on Concrete Deck without Thermal Insulation
030.	Inverted Roof System, Loose Laid Membrane on Concrete Deck with Paving Slabs
031.	Inverted Roof System, Loose Laid Membrane on Concrete Deck with Green Roof System
032.	Inverted Roof System, Adhered Membrane on Concrete Deck with Paving Slabs
033.	Inverted Roof System, Adhered Membrane on Concrete Deck with Green Roof System
040.	Utility Roof System on Concrete Deck with Thermal Insulation and Paving Slabs
041.	Utility Roof System on Concrete Deck without Thermal Insulation and Paving Slabs
050.	Green Roof System - Extensive on Concrete Deck with Thermal Insulation
051.	Green Roof System - Intensive on Concrete Deck with Thermal Insulation
060.	Adhered Roof System on Concrete Deck with Thermal Insulation
061.	Adhered Roof System on Concrete Deck without Thermal Insulation
100.	Fully Torched System to a Cement Mortar Layer on Concrete Deck with Thermal Insulation
101.	Fully Torched System on Concrete Deck without Thermal Insulation

01

Variants

00.	Build-up	Details
01.	Parapet	
02.	Roof Edge Termination	
03.	Upstand	
04.	Skylight	
05.	Roof Drain (Outlet)	
06.	Scupper	
07.	Overflow	
08.	Vent Pipe / Post	
09.	Gutter	
10.	Movement Joint	
11.	Penetration	
12.	Foundation	
13.	Various	

SARNAFIL® TPO - GREEN ROOF SYSTEM - INTENSIVE ON CONCRETE DECK WITH THERMAL INSULATION

LIST OF DETAILS

SF TPO - 051.00.01 - Build-up

SF TPO - 051.01.01 - Parapet - Sarnafil® T Metal Sheet - Mechanically Fastened on Concrete Parapet

SF TPO - 051.01.02 - Parapet - Sarnafil® T Metal Sheet – Adhered on Concrete Parapet

SF TPO - 051.01.03 - Parapet - Metal Capping - Mechanically Fastened on Concrete Parapet

SF TPO - 051.01.04 - Parapet - Metal Capping - Adhered on Concrete Parapet

SF TPO - 051.02.01 - Roof Edge Termination with Gutter

SF TPO - 051.03.01 - Upstand - Sarnafil® T Metal Sheet - Mechanically Fastened on Concrete Wall

SF TPO - 051.03.02 - Upstand - Sarnafil® T Metal Sheet - Adhered on Concrete Wall

SF TPO - 051.03.03 - Upstand - Counter Flashing - Adhered on Concrete Wall

SF TPO - 051.04.01 - Skylight - Sealed - Mechanically Fastened on Skylight System

SF TPO - 051.04.02 - Skylight - Sealed - Adhered on Skylight System

SF TPO - 051.04.03 - Skylight - Clamped - Mechanically Fastened on Skylight System

SF TPO - 051.04.04 - Skylight - Clamped - Adhered on Skylight System

SF TPO - 051.05.01 - Roof Drain (Outlet)

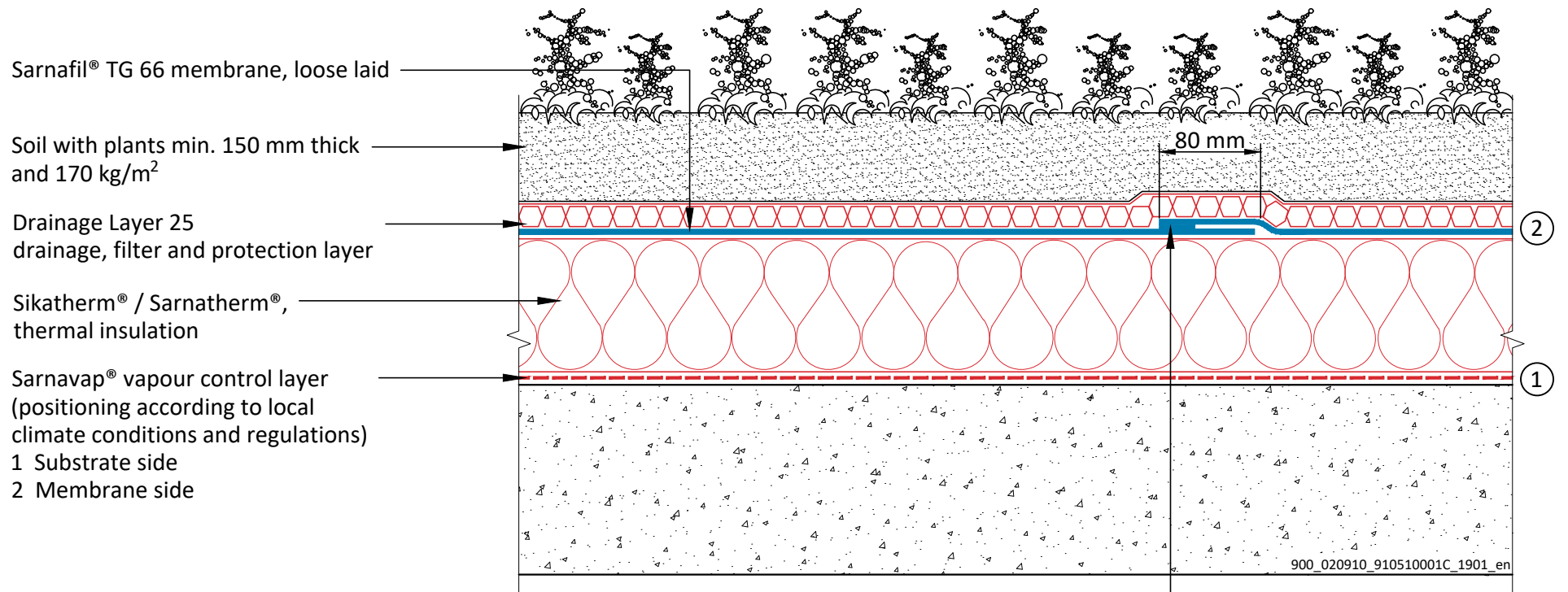
SF TPO - 051.06.01 - Scupper - Mechanically Fastened on Concrete Wall

SF TPO - 051.06.02 - Scupper - Adhered on Concrete Wall

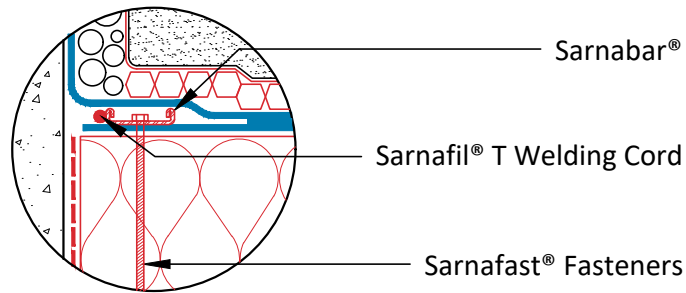
SF TPO - 051.07.01 - Overflow - Mechanically Fastened on Concrete Wall

SF TPO - 051.07.02 - Overflow - Adhered on Concrete Wall

SF TPO - 051.08.01 - Vent Pipe / Post



Sarnabar® Perimeter Securement



Suitable for roof systems without slope

All flashings, terminations and penetrations wider than 500 mm must be secured mechanically using Sarnabar®.

SARNAFIL® TPO - GREEN ROOF SYSTEM - INTENSIVE ON CONCRETE DECK WITH THERMAL INSULATION

SF TPO - 051.00.01 - Build-up

Sika General Detail. Template for translation.

900_020910_910510001C_1901_en
January 2019

Sika Services AG

Tüffenwies 16
8048 Zürich
Switzerland

Tel: +41 584364040

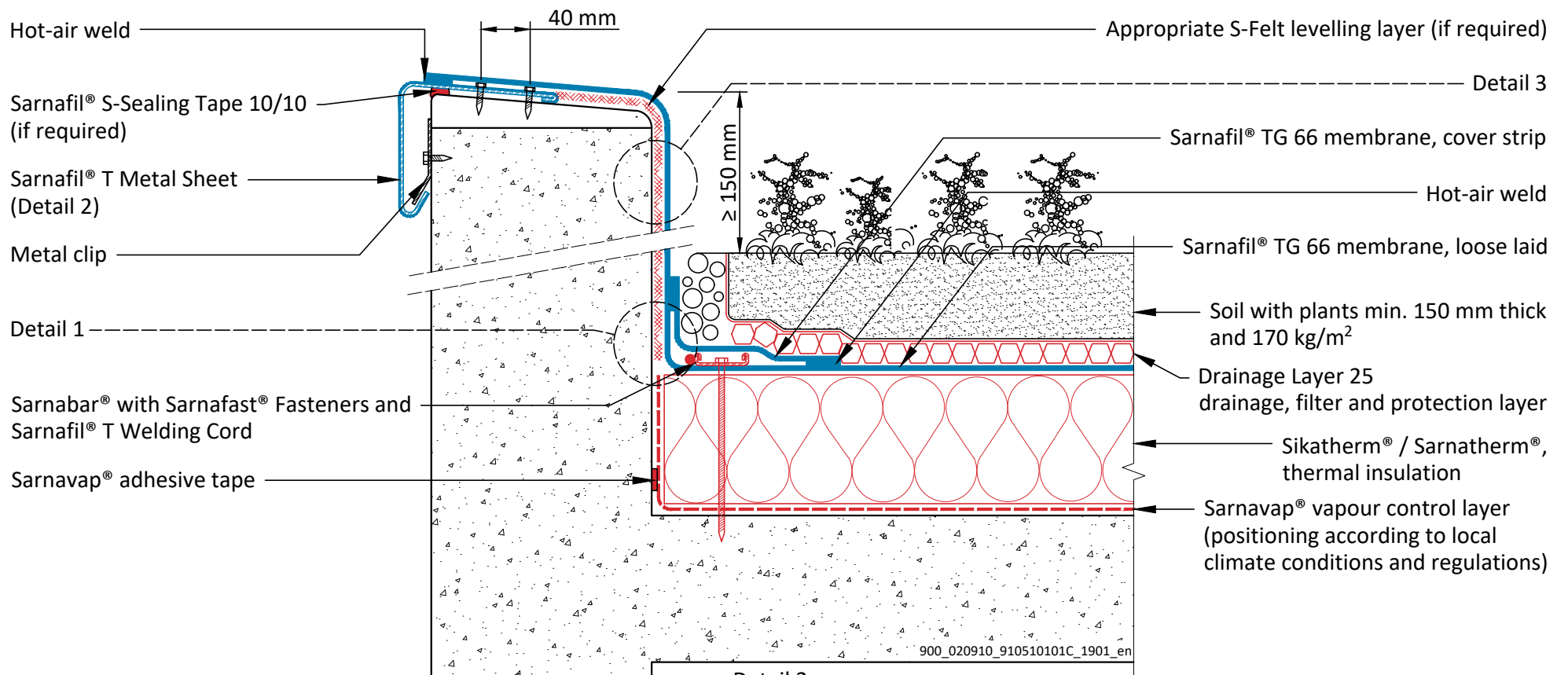
www.sika.com

BUILDING TRUST

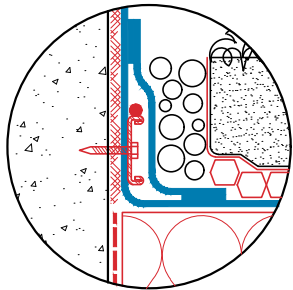


DRAWING MUST ALWAYS BE REVIEWED BY A DESIGN SPECIALIST AND IF NECESSARY MODIFIED TO ENSURE SUITABILITY FOR THE SPECIFIC APPLICATION

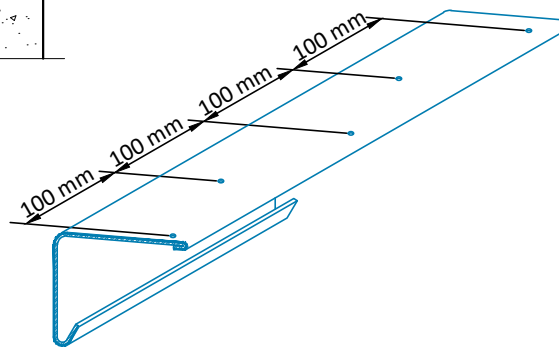
The information contained herein and any other advice are given in good faith based on Sika's current knowledge and experience of the products when properly stored, handled and applied under normal conditions in accordance with Sika's recommendations. The information only applies to the application(s) and product(s) expressly referred to herein and is based on laboratory tests which do not replace practical tests. In case of changes in the parameters of the application, such as changes in substrates etc., or in case of a different application, consult Sika's Technical Service prior to using Sika products. The information contained herein does not relieve the user of the products from testing them for the intended application and purpose. All orders are accepted subject to our current terms of sale and delivery. Users must always refer to the most recent issue of the local Product Data Sheet for the product concerned, copies of which will be supplied on request.



Detail 1
Sarnabar® Perimeter Securement Vertical (Alternative)

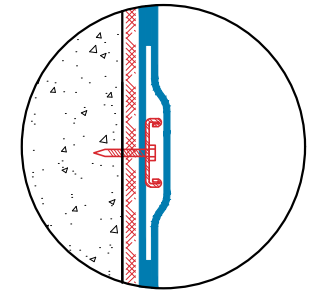


Detail 2
Sarnafil® T Metal Sheet Fastening



Suitable for roof systems without slope

Detail 3
Additional Fastening for Parapet Height > 800 mm



SARNAFIL® TPO - GREEN ROOF SYSTEM - INTENSIVE ON CONCRETE DECK WITH THERMAL INSULATION

SF TPO - 051.01.01 - Parapet - Sarnafil® T Metal Sheet - Mechanically Fastened on Concrete Parapet

Sika General Detail. Template for translation.

900_020910_910510101C_1901_en
January 2019

Sika Services AG

Tüffenwies 16
8048 Zürich
Switzerland

Tel: +41 584364040

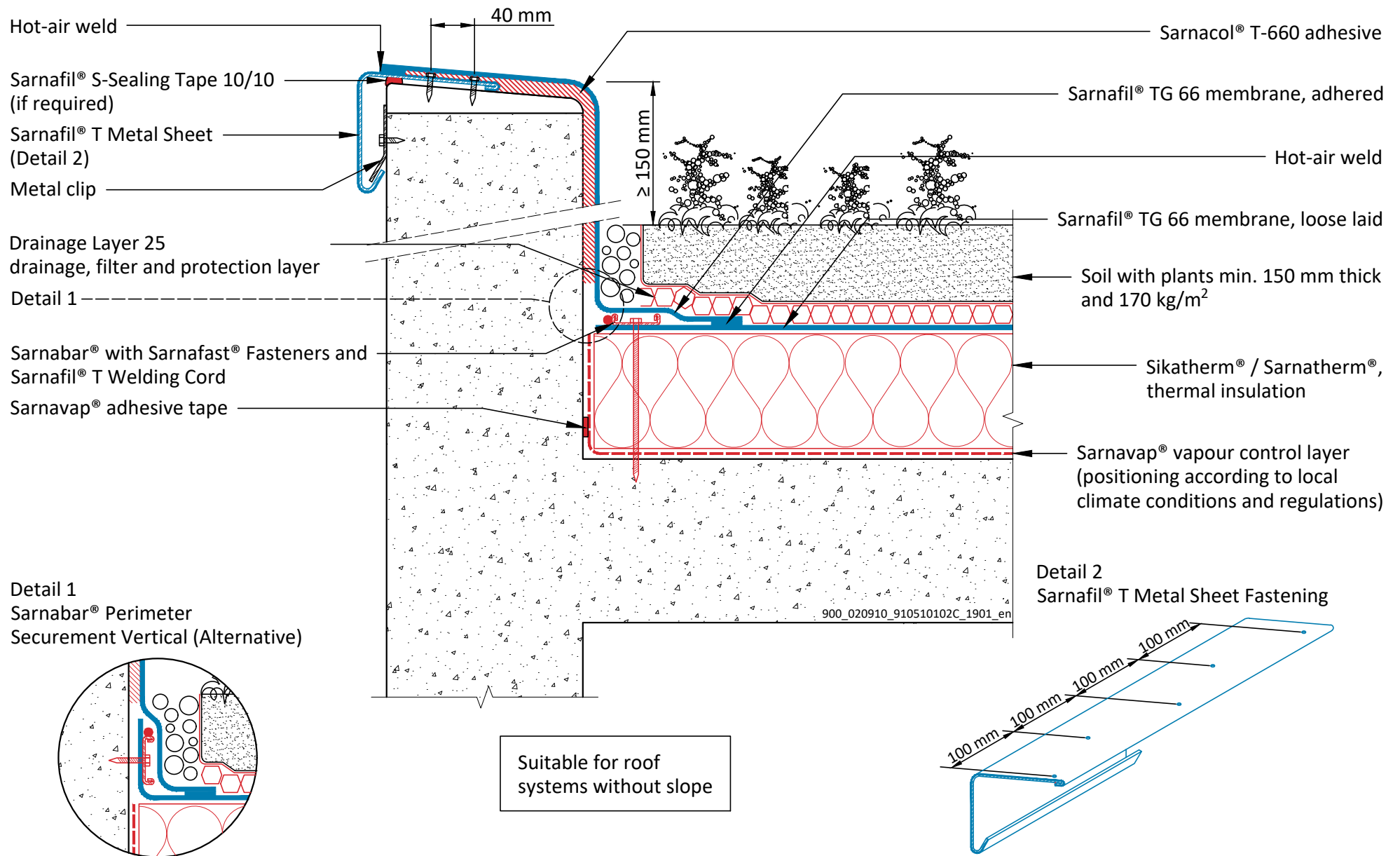
www.sika.com

BUILDING TRUST

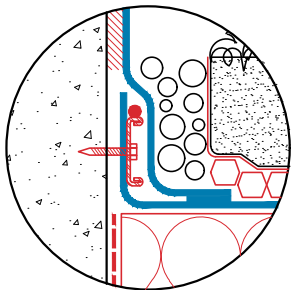


DRAWING MUST ALWAYS BE REVIEWED BY A DESIGN SPECIALIST AND IF NECESSARY MODIFIED TO ENSURE SUITABILITY FOR THE SPECIFIC APPLICATION

The information contained herein and any other advice are given in good faith based on Sika's current knowledge and experience of the products when properly stored, handled and applied under normal conditions in accordance with Sika's recommendations. The information only applies to the application(s) and product(s) expressly referred to herein and is based on laboratory tests which do not replace practical tests. In case of changes in the parameters of the application, such as changes in substrates etc., or in case of a different application, consult Sika's Technical Service prior to using Sika products. The information contained herein does not relieve the user of the products from testing them for the intended application and purpose. All orders are accepted subject to our current terms of sale and delivery. Users must always refer to the most recent issue of the local Product Data Sheet for the product concerned, copies of which will be supplied on request.



Detail 1
Sarnabar® Perimeter
Securement Vertical (Alternative)



**SARNAFIL® TPO - GREEN ROOF SYSTEM - INTENSIVE
ON CONCRETE DECK WITH THERMAL INSULATION**
SF TPO - 051.01.02 - Parapet - Sarnafil® T Metal Sheet - Adhered on Concrete Parapet
Sika General Detail. Template for translation.

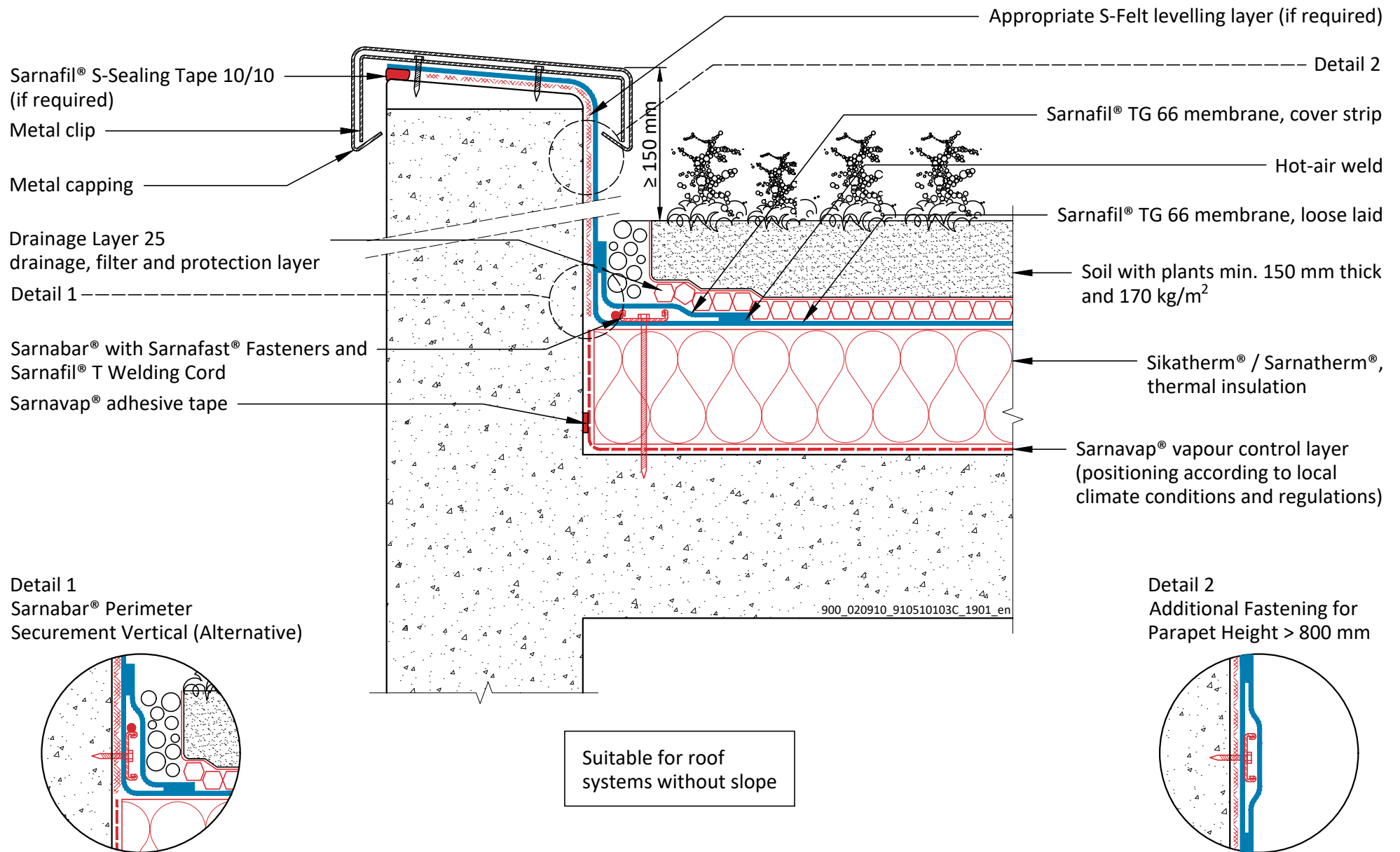
900_020910_910510102C_1901_en
January 2019

Sika Services AG
Tüffenwies 16
8048 Zürich
Switzerland
Tel: +41 584364040
www.sika.com

BUILDING TRUST



DRAWING MUST ALWAYS BE REVIEWED BY A DESIGN SPECIALIST AND IF NECESSARY MODIFIED TO ENSURE SUITABILITY FOR THE SPECIFIC APPLICATION
The information contained herein and any other advice are given in good faith based on Sika's current knowledge and experience of the products when properly stored, handled and applied under normal conditions in accordance with Sika's recommendations. The information only applies to the application(s) and product(s) expressly referred to herein and is based on laboratory tests which do not replace practical tests. In case of changes in the parameters of the application, such as changes in substrates etc., or in case of a different application, consult Sika's Technical Service prior to using Sika products. The information contained herein does not relieve the user of the products from testing them for the intended application and purpose. All orders are accepted subject to our current terms of sale and delivery. Users must always refer to the most recent issue of the local Product Data Sheet for the product concerned, copies of which will be supplied on request.



SARNAFIL® TPO - GREEN ROOF SYSTEM - INTENSIVE
ON CONCRETE DECK WITH THERMAL INSULATION
 SF TPO - 051.01.03 - Parapet - Metal Capping - Mechanically Fastened on Concrete Parapet
 Sika General Detail. Template for translation.

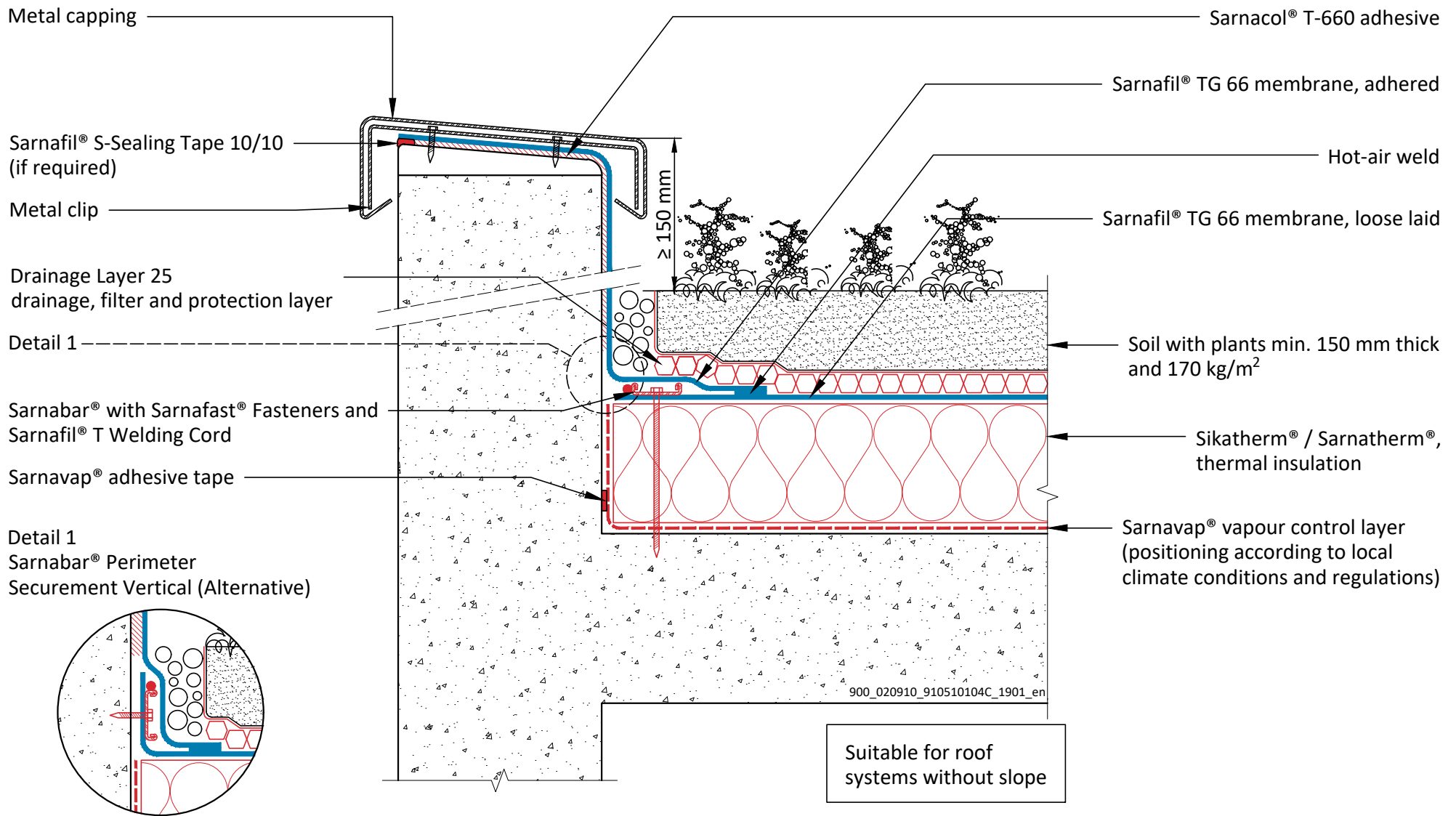
900_020910_910510103C_1901_en
 January 2019

Sika Services AG
 Tüffenwies 16
 8048 Zürich
 Switzerland
 Tel: +41 584364040
 www.sika.com



DRAWING MUST ALWAYS BE REVIEWED BY A DESIGN SPECIALIST AND IF NECESSARY MODIFIED TO ENSURE SUITABILITY FOR THE SPECIFIC APPLICATION

The information contained herein and any other advice are given in good faith based on Sika's current knowledge and experience of the products when properly stored, handled and applied under normal conditions in accordance with Sika's recommendations. The information only applies to the application(s) and product(s) expressly referred to herein and is based on laboratory tests which do not replace practical tests. In case of changes in the parameters of the application, such as changes in substrates etc., or in case of a different application, consult Sika's Technical Service prior to using Sika products. The information contained herein does not relieve the user of the products from testing them for the intended application and purpose. All orders are accepted subject to our current terms of sale and delivery. Users must always refer to the most recent issue of the local Product Data Sheet for the product concerned, copies of which will be supplied on request.



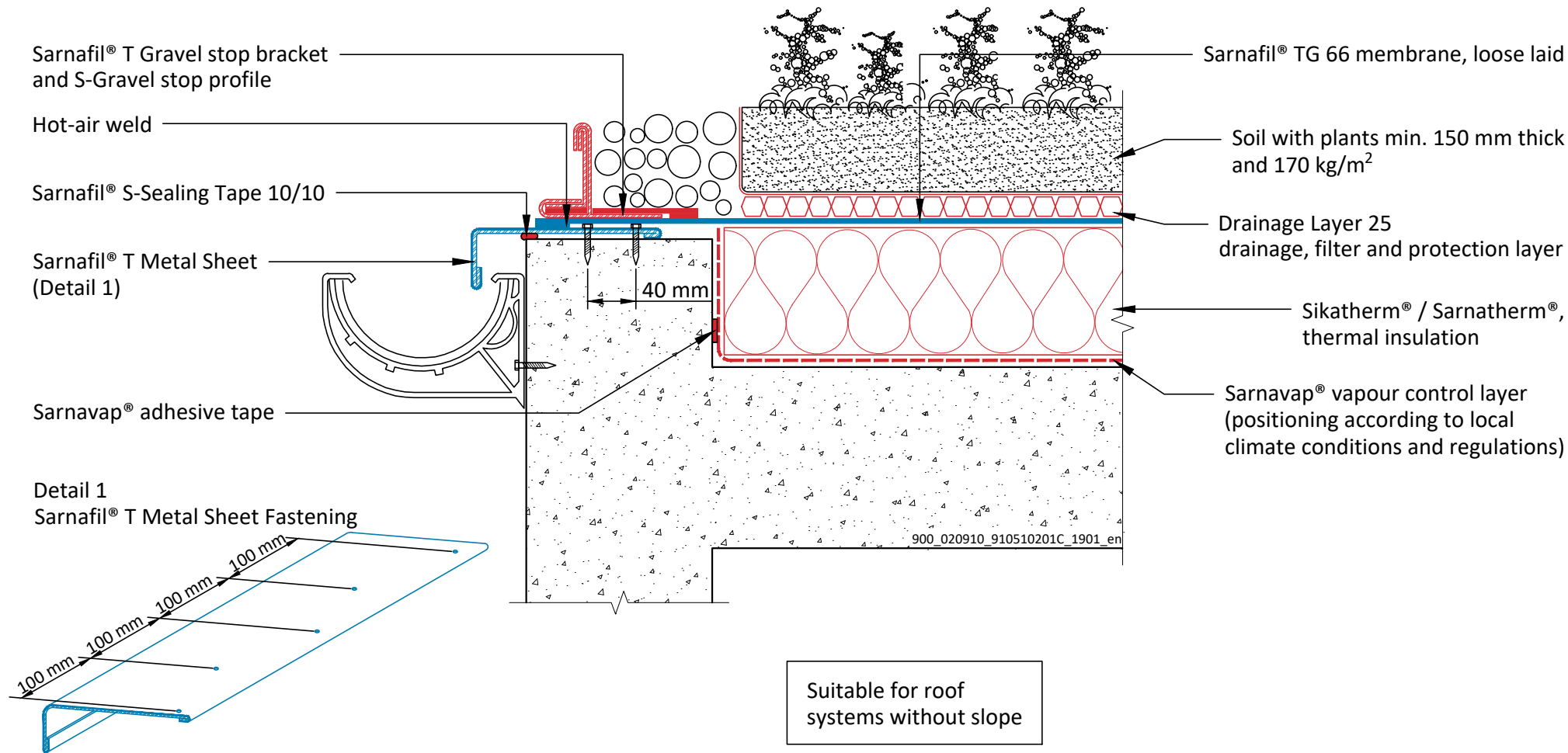
**SARNAFIL® TPO - GREEN ROOF SYSTEM - INTENSIVE
ON CONCRETE DECK WITH THERMAL INSULATION**
SF TPO - 051.01.04 - Parapet - Metal Capping - Adhered on Concrete Parapet
Sika General Detail. Template for translation.

900_020910_910510104C_1901_en
January 2019

Sika Services AG
Tüffenwies 16
8048 Zürich
Switzerland
Tel: +41 584364040
www.sika.com



DRAWING MUST ALWAYS BE REVIEWED BY A DESIGN SPECIALIST AND IF NECESSARY MODIFIED TO ENSURE SUITABILITY FOR THE SPECIFIC APPLICATION
The information contained herein and any other advice are given in good faith based on Sika's current knowledge and experience of the products when properly stored, handled and applied under normal conditions in accordance with Sika's recommendations. The information only applies to the application(s) and product(s) expressly referred to herein and is based on laboratory tests which do not replace practical tests. In case of changes in the parameters of the application, such as changes in substrates etc., or in case of a different application, consult Sika's Technical Service prior to using Sika products. The information contained herein does not relieve the user of the products from testing them for the intended application and purpose. All orders are accepted subject to our current terms of sale and delivery. Users must always refer to the most recent issue of the local Product Data Sheet for the product concerned, copies of which will be supplied on request.



SARNAFIL® TPO - GREEN ROOF SYSTEM - INTENSIVE ON CONCRETE DECK WITH THERMAL INSULATION

SF TPO - 051.02.01 - Roof Edge Termination with Gutter

Sika General Detail. Template for translation.

900_020910_910510201C_1901_en
January 2019

Sika Services AG

Tüffenwies 16
8048 Zürich
Switzerland

Tel: +41 584364040

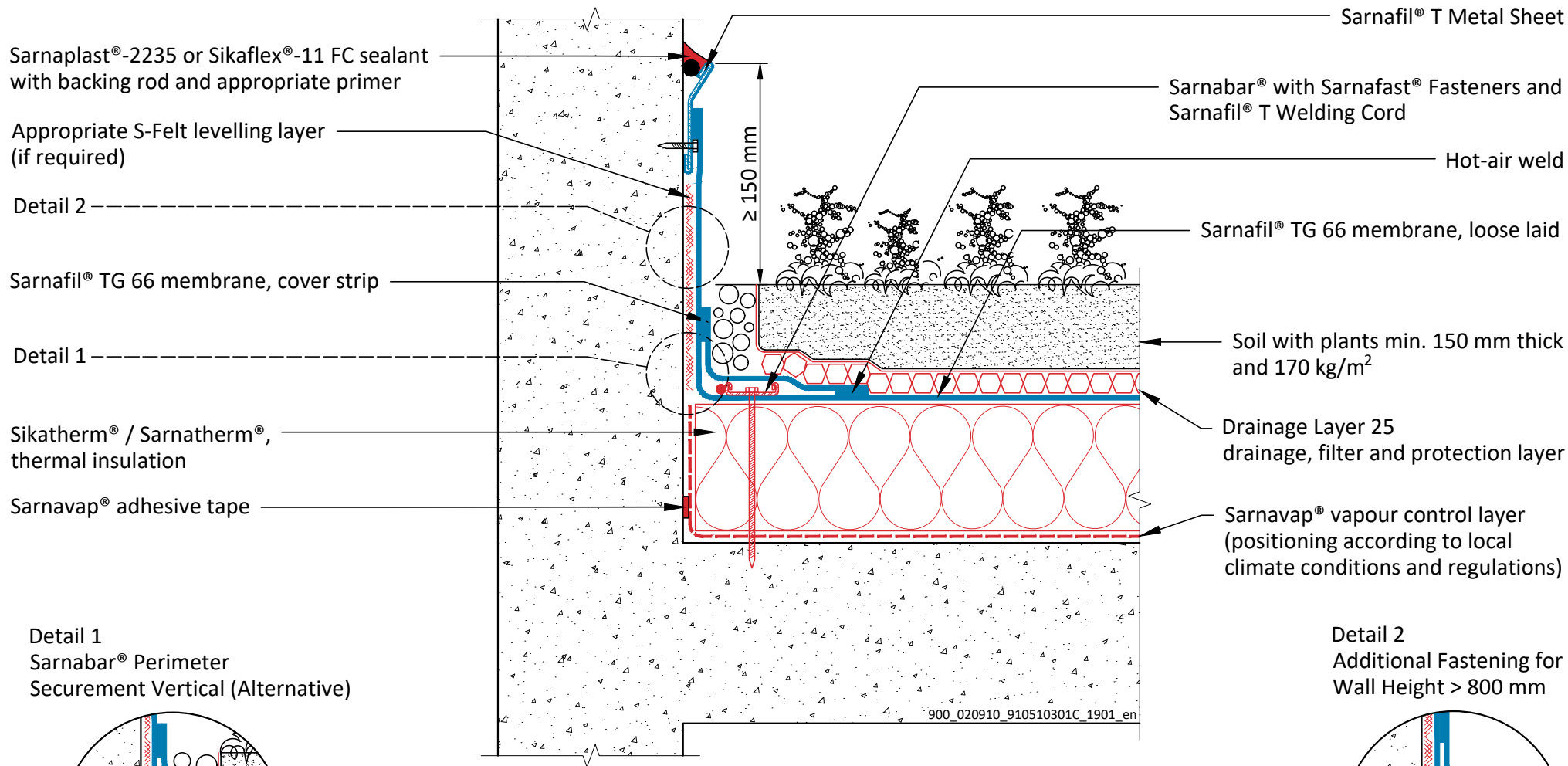
www.sika.com

BUILDING TRUST



DRAWING MUST ALWAYS BE REVIEWED BY A DESIGN SPECIALIST AND IF NECESSARY MODIFIED TO ENSURE SUITABILITY FOR THE SPECIFIC APPLICATION

The information contained herein and any other advice are given in good faith based on Sika's current knowledge and experience of the products when properly stored, handled and applied under normal conditions in accordance with Sika's recommendations. The information only applies to the application(s) and product(s) expressly referred to herein and is based on laboratory tests which do not replace practical tests. In case of changes in the parameters of the application, such as changes in substrates etc., or in case of a different application, consult Sika's Technical Service prior to using Sika products. The information contained herein does not relieve the user of the products from testing them for the intended application and purpose. All orders are accepted subject to our current terms of sale and delivery. Users must always refer to the most recent issue of the local Product Data Sheet for the product concerned, copies of which will be supplied on request.



Suitable for roof systems without slope

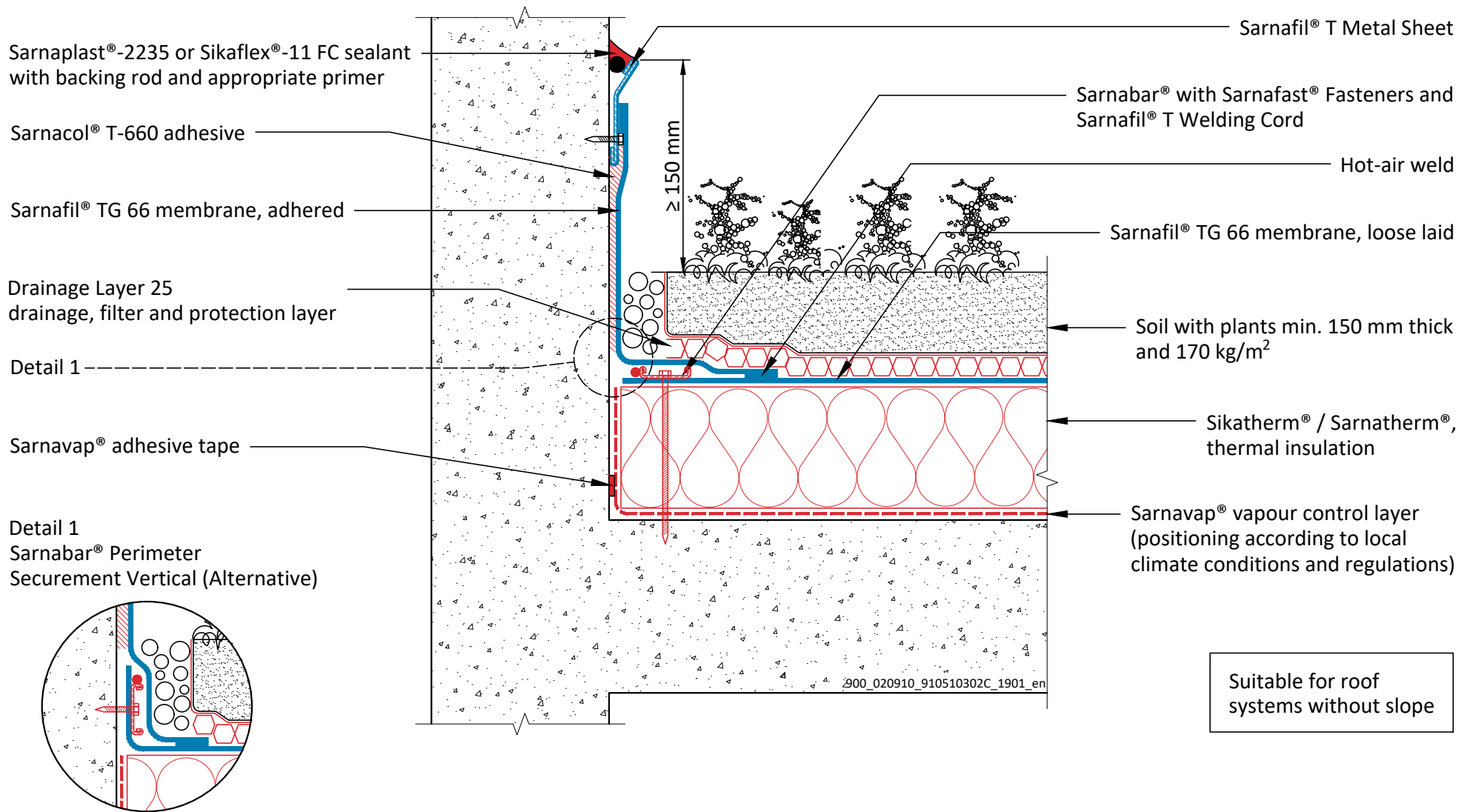
SARNAFIL® TPO - GREEN ROOF SYSTEM - INTENSIVE ON CONCRETE DECK WITH THERMAL INSULATION
 SF TPO - 051.03.01 - Upstand - Sarnafil® T Metal Sheet - Mechanically Fastened on Concrete Wall
 Sika General Detail. Template for translation.

900_020910_910510301C_1901_en
 January 2019

Sika Services AG
 Tüffenwies 16
 8048 Zürich
 Switzerland
 Tel: +41 584364040
 www.sika.com



DRAWING MUST ALWAYS BE REVIEWED BY A DESIGN SPECIALIST AND IF NECESSARY MODIFIED TO ENSURE SUITABILITY FOR THE SPECIFIC APPLICATION
 The information contained herein and any other advice are given in good faith based on Sika's current knowledge and experience of the products when properly stored, handled and applied under normal conditions in accordance with Sika's recommendations. The information only applies to the application(s) and product(s) expressly referred to herein and is based on laboratory tests which do not replace practical tests. In case of changes in the parameters of the application, such as changes in substrates etc., or in case of a different application, consult Sika's Technical Service prior to using Sika products. The information contained herein does not relieve the user of the products from testing them for the intended application and purpose. All orders are accepted subject to our current terms of sale and delivery. Users must always refer to the most recent issue of the local Product Data Sheet for the product concerned, copies of which will be supplied on request.



Suitable for roof systems without slope

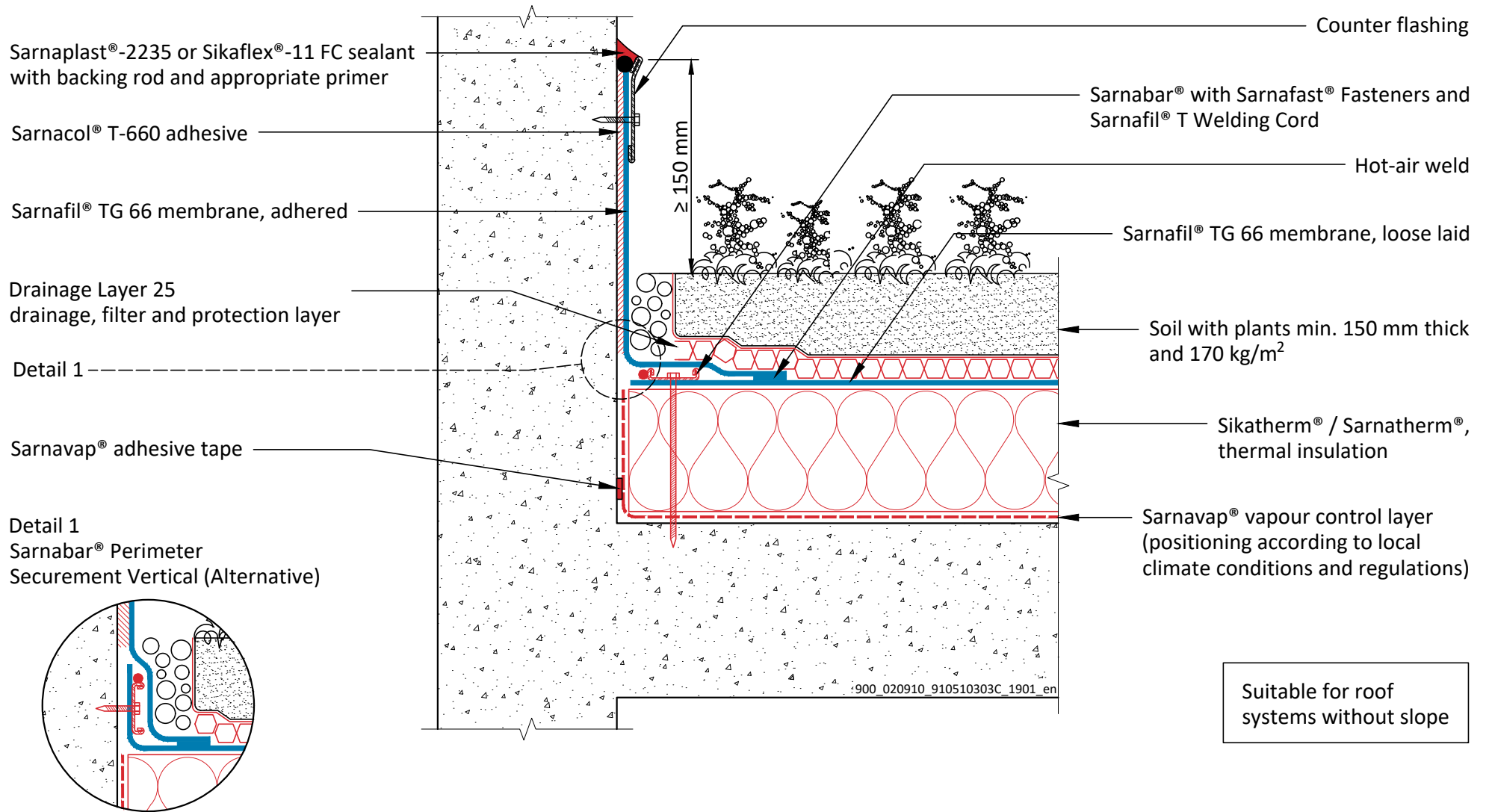
SARNAFIL® TPO - GREEN ROOF SYSTEM - INTENSIVE ON CONCRETE DECK WITH THERMAL INSULATION
 SF TPO - 051.03.02 - Upstand - Sarnafil® T Metal Sheet - Adhered on Concrete Wall
 Sika General Detail. Template for translation.

900_020910_910510302C_1901_en
 January 2019

Sika Services AG
 Tüffenwies 16
 8048 Zürich
 Switzerland
 Tel: +41 584364040
 www.sika.com



DRAWING MUST ALWAYS BE REVIEWED BY A DESIGN SPECIALIST AND IF NECESSARY MODIFIED TO ENSURE SUITABILITY FOR THE SPECIFIC APPLICATION
 The information contained herein and any other advice are given in good faith based on Sika's current knowledge and experience of the products when properly stored, handled and applied under normal conditions in accordance with Sika's recommendations. The information only applies to the application(s) and product(s) expressly referred to herein and is based on laboratory tests which do not replace practical tests. In case of changes in the parameters of the application, such as changes in substrates etc., or in case of a different application, consult Sika's Technical Service prior to using Sika products. The information contained herein does not relieve the user of the products from testing them for the intended application and purpose. All orders are accepted subject to our current terms of sale and delivery. Users must always refer to the most recent issue of the local Product Data Sheet for the product concerned, copies of which will be supplied on request.



Suitable for roof systems without slope

SARNAFIL® TPO - GREEN ROOF SYSTEM - INTENSIVE ON CONCRETE DECK WITH THERMAL INSULATION

SF TPO - 051.03.03 - Upstand - Counter Flashing - Adhered on Concrete Wall

Sika General Detail. Template for translation.

900_020910_910510303C_1901_en
January 2019

Sika Services AG

Tüffenwies 16
8048 Zürich
Switzerland

Tel: +41 584364040

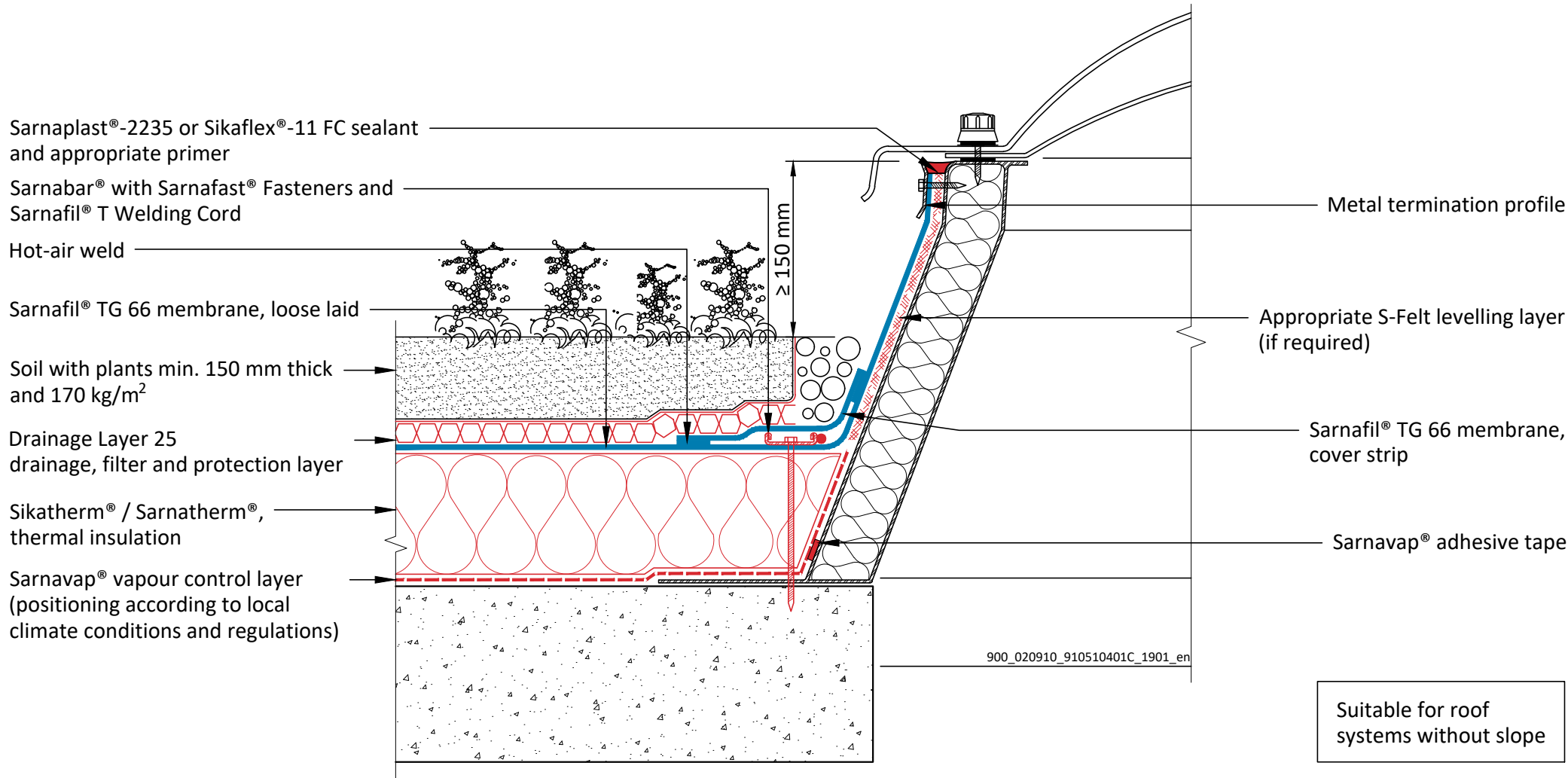
www.sika.com

BUILDING TRUST



DRAWING MUST ALWAYS BE REVIEWED BY A DESIGN SPECIALIST AND IF NECESSARY MODIFIED TO ENSURE SUITABILITY FOR THE SPECIFIC APPLICATION

The information contained herein and any other advice are given in good faith based on Sika's current knowledge and experience of the products when properly stored, handled and applied under normal conditions in accordance with Sika's recommendations. The information only applies to the application(s) and product(s) expressly referred to herein and is based on laboratory tests which do not replace practical tests. In case of changes in the parameters of the application, such as changes in substrates etc., or in case of a different application, consult Sika's Technical Service prior to using Sika products. The information contained herein does not relieve the user of the products from testing them for the intended application and purpose. All orders are accepted subject to our current terms of sale and delivery. Users must always refer to the most recent issue of the local Product Data Sheet for the product concerned, copies of which will be supplied on request.



Suitable for roof systems without slope

900_020910_910510401C_1901_en

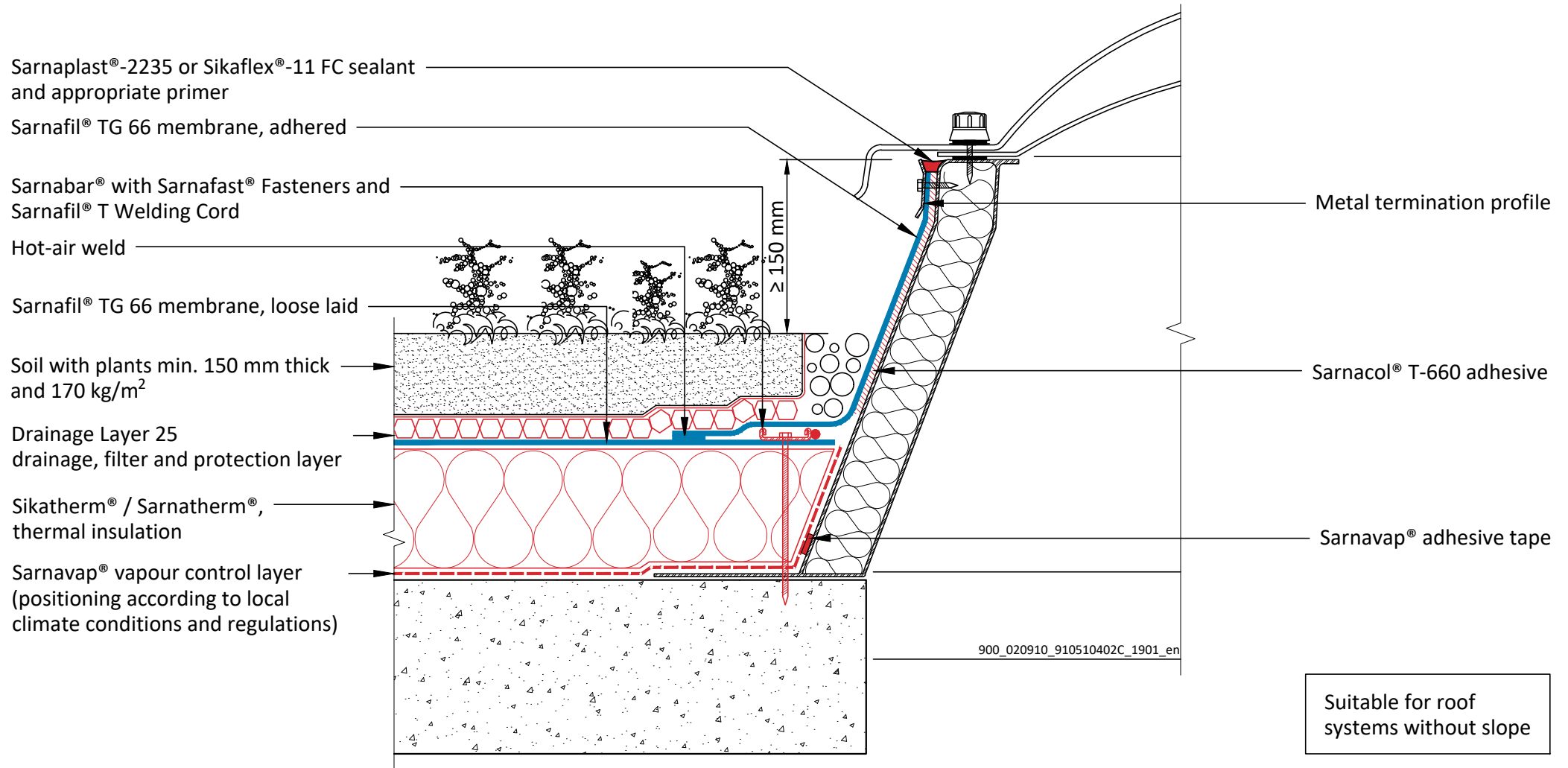
**SARNAFIL® TPO - GREEN ROOF SYSTEM - INTENSIVE
ON CONCRETE DECK WITH THERMAL INSULATION**
SF TPO - 051.04.01 - Skylight - Sealed - Mechanically Fastened on Skylight System
Sika General Detail. Template for translation.

900_020910_910510401C_1901_en
January 2019

Sika Services AG
Tüffenwies 16
8048 Zürich
Switzerland
Tel: +41 584364040
www.sika.com



DRAWING MUST ALWAYS BE REVIEWED BY A DESIGN SPECIALIST AND IF NECESSARY MODIFIED TO ENSURE SUITABILITY FOR THE SPECIFIC APPLICATION
The information contained herein and any other advice are given in good faith based on Sika's current knowledge and experience of the products when properly stored, handled and applied under normal conditions in accordance with Sika's recommendations. The information only applies to the application(s) and product(s) expressly referred to herein and is based on laboratory tests which do not replace practical tests. In case of changes in the parameters of the application, such as changes in substrates etc., or in case of a different application, consult Sika's Technical Service prior to using Sika products. The information contained herein does not relieve the user of the products from testing them for the intended application and purpose. All orders are accepted subject to our current terms of sale and delivery. Users must always refer to the most recent issue of the local Product Data Sheet for the product concerned, copies of which will be supplied on request.



Suitable for roof systems without slope

SARNAFIL® TPO - GREEN ROOF SYSTEM - INTENSIVE
ON CONCRETE DECK WITH THERMAL INSULATION
 SF TPO - 051.04.02 - Skylight - Sealed - Adhered on Skylight System
 Sika General Detail. Template for translation.

900_020910_910510402C_1901_en
 January 2019

Sika Services AG
 Tüffenwies 16
 8048 Zürich
 Switzerland
 Tel: +41 584364040
 www.sika.com

BUILDING TRUST



DRAWING MUST ALWAYS BE REVIEWED BY A DESIGN SPECIALIST AND IF NECESSARY MODIFIED TO ENSURE SUITABILITY FOR THE SPECIFIC APPLICATION
 The information contained herein and any other advice are given in good faith based on Sika's current knowledge and experience of the products when properly stored, handled and applied under normal conditions in accordance with Sika's recommendations. The information only applies to the application(s) and product(s) expressly referred to herein and is based on laboratory tests which do not replace practical tests. In case of changes in the parameters of the application, such as changes in substrates etc., or in case of a different application, consult Sika's Technical Service prior to using Sika products. The information contained herein does not relieve the user of the products from testing them for the intended application and purpose. All orders are accepted subject to our current terms of sale and delivery. Users must always refer to the most recent issue of the local Product Data Sheet for the product concerned, copies of which will be supplied on request.

Sarnabar® with Sarnafast® Fasteners and Sarnafil® T Welding Cord

Hot-air weld

Sarnafil® TG 66 membrane, loose laid

Soil with plants min. 150 mm thick and 170 kg/m²

Drainage Layer 25 drainage, filter and protection layer

Sikatherm® / Sarnatherm®, thermal insulation

Sarnavap® vapour control layer (positioning according to local climate conditions and regulations)

≥ 150 mm

Appropriate S-Felt levelling layer (if required)

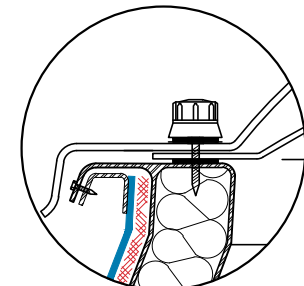
Sarnafil® TG 66 membrane, cover strip

Sarnavap® adhesive tape

900_020910_910510403C_1901_en

Metalclip Termination (Alternative)

Suitable for roof systems without slope



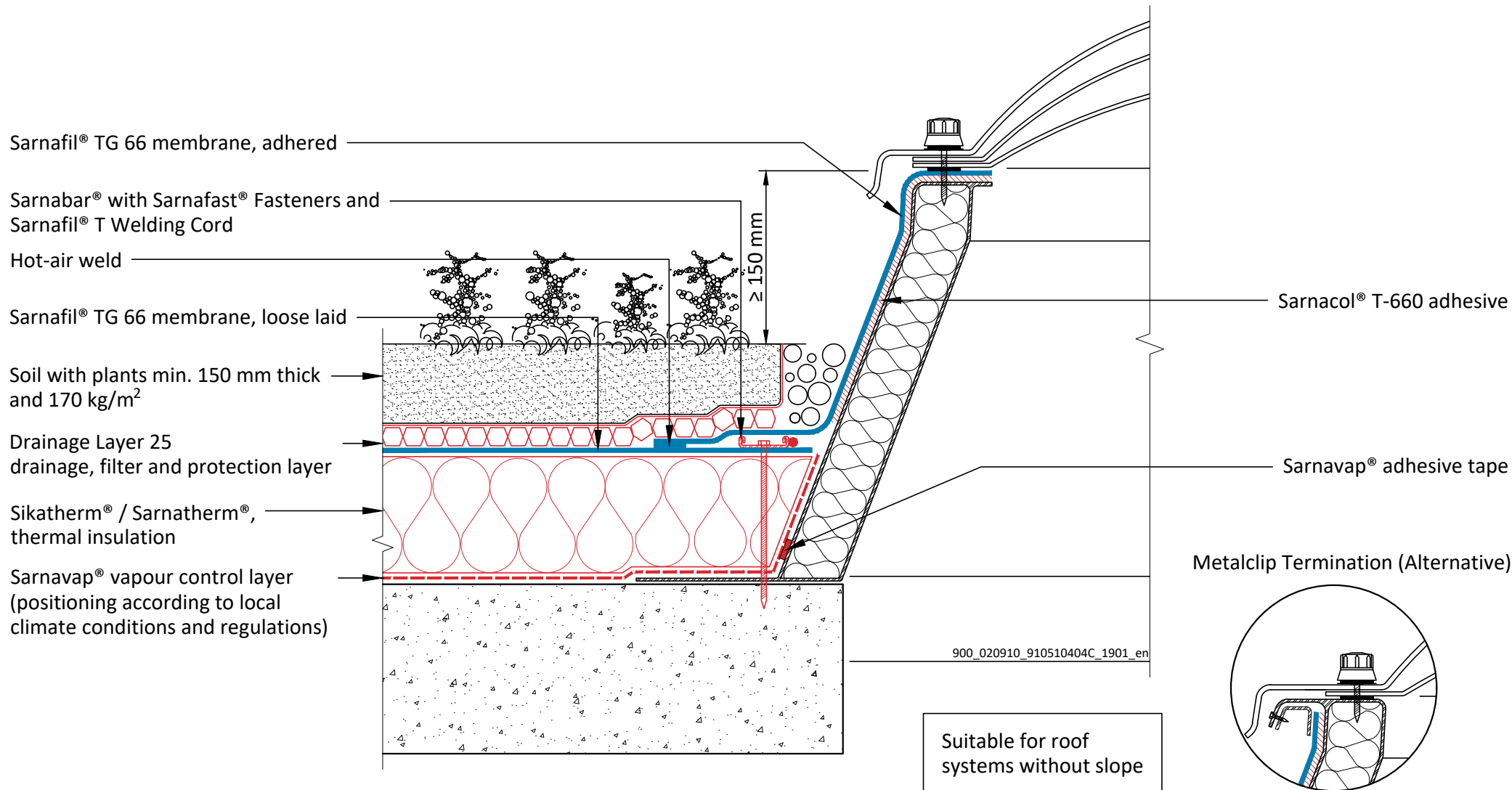
SARNAFIL® TPO - GREEN ROOF SYSTEM - INTENSIVE ON CONCRETE DECK WITH THERMAL INSULATION
SF TPO - 051.04.03 - Skylight - Clamped - Mechanically Fastened on Skylight System
Sika General Detail. Template for translation.

900_020910_910510403C_1901_en
January 2019

Sika Services AG
Tüffenwies 16
8048 Zürich
Switzerland
Tel: +41 584364040
www.sika.com



DRAWING MUST ALWAYS BE REVIEWED BY A DESIGN SPECIALIST AND IF NECESSARY MODIFIED TO ENSURE SUITABILITY FOR THE SPECIFIC APPLICATION
The information contained herein and any other advice are given in good faith based on Sika's current knowledge and experience of the products when properly stored, handled and applied under normal conditions in accordance with Sika's recommendations. The information only applies to the application(s) and product(s) expressly referred to herein and is based on laboratory tests which do not replace practical tests. In case of changes in the parameters of the application, such as changes in substrates etc., or in case of a different application, consult Sika's Technical Service prior to using Sika products. The information contained herein does not relieve the user of the products from testing them for the intended application and purpose. All orders are accepted subject to our current terms of sale and delivery. Users must always refer to the most recent issue of the local Product Data Sheet for the product concerned, copies of which will be supplied on request.



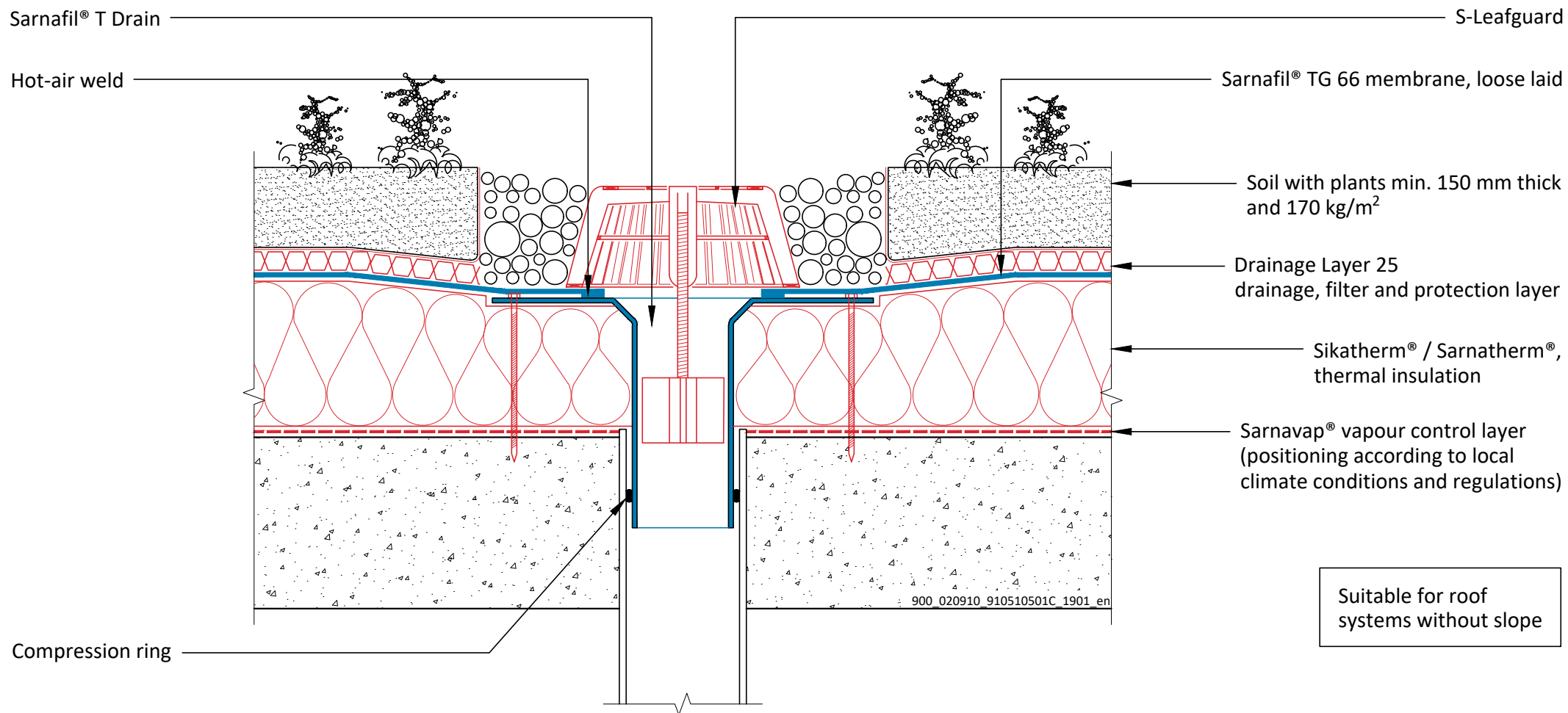
SARNAFIL® TPO - GREEN ROOF SYSTEM - INTENSIVE ON CONCRETE DECK WITH THERMAL INSULATION
 SF TPO - 051.04.04 - Skylight - Clamped - Adhered on Skylight System
 Sika General Detail. Template for translation.

900_020910_910510404C_1901_en
 January 2019

Sika Services AG
 Tüffenwies 16
 8048 Zürich
 Switzerland
 Tel: +41 584364040
 www.sika.com



DRAWING MUST ALWAYS BE REVIEWED BY A DESIGN SPECIALIST AND IF NECESSARY MODIFIED TO ENSURE SUITABILITY FOR THE SPECIFIC APPLICATION
 The information contained herein and any other advice are given in good faith based on Sika's current knowledge and experience of the products when properly stored, handled and applied under normal conditions in accordance with Sika's recommendations. The information only applies to the application(s) and product(s) expressly referred to herein and is based on laboratory tests which do not replace practical tests. In case of changes in the parameters of the application, such as changes in substrates etc., or in case of a different application, consult Sika's Technical Service prior to using Sika products. The information contained herein does not relieve the user of the products from testing them for the intended application and purpose. All orders are accepted subject to our current terms of sale and delivery. Users must always refer to the most recent issue of the local Product Data Sheet for the product concerned, copies of which will be supplied on request.



**SARNAFIL® TPO - GREEN ROOF SYSTEM - INTENSIVE
ON CONCRETE DECK WITH THERMAL INSULATION**

SF TPO - 051.05.01 - Roof Drain (Outlet)

Sika General Detail. Template for translation.

900_020910_910510501C_1901_en
January 2019

Sika Services AG

Tüffenwies 16
8048 Zürich
Switzerland

Tel: +41 584364040

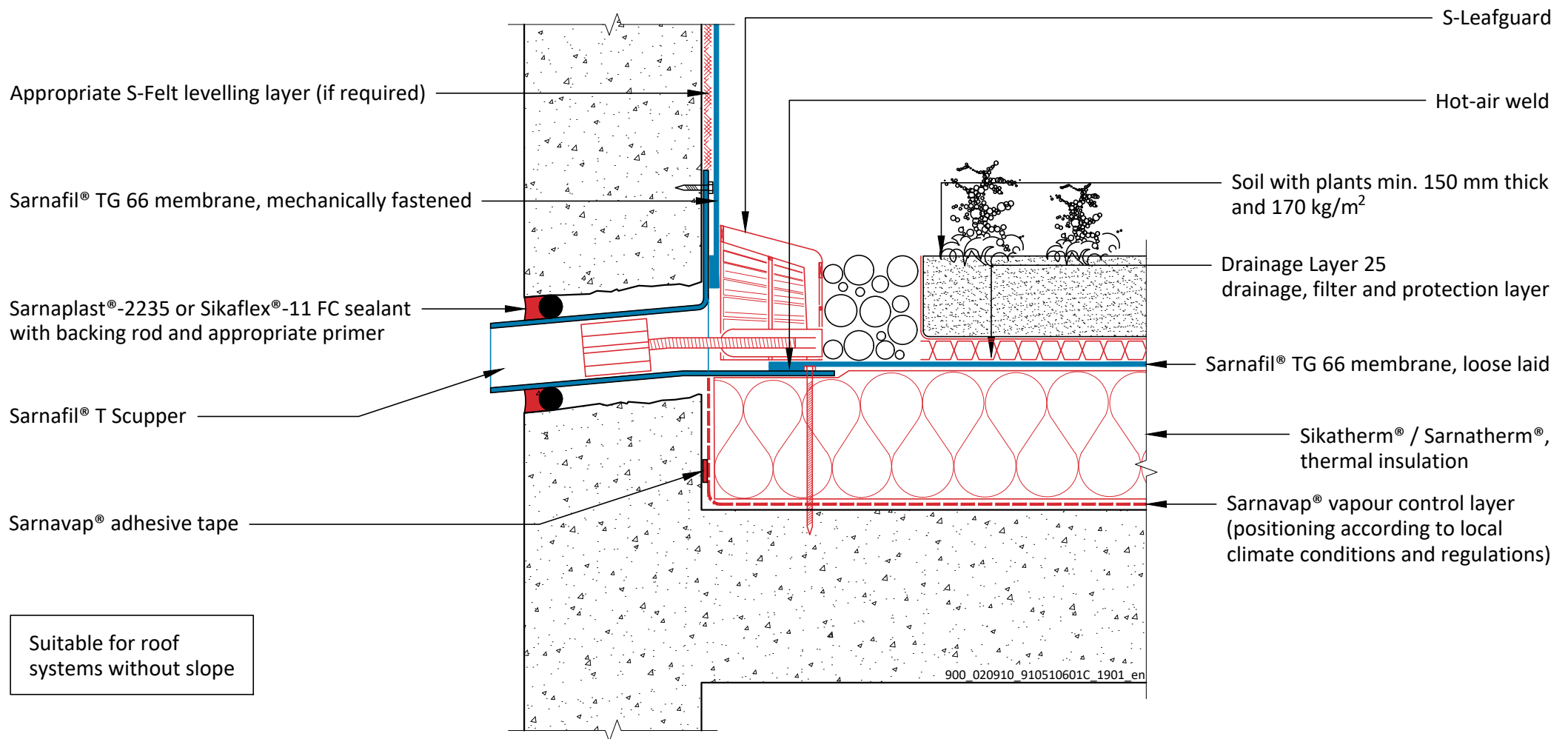
www.sika.com

BUILDING TRUST



DRAWING MUST ALWAYS BE REVIEWED BY A DESIGN SPECIALIST AND IF NECESSARY MODIFIED TO ENSURE SUITABILITY FOR THE SPECIFIC APPLICATION

The information contained herein and any other advice are given in good faith based on Sika's current knowledge and experience of the products when properly stored, handled and applied under normal conditions in accordance with Sika's recommendations. The information only applies to the application(s) and product(s) expressly referred to herein and is based on laboratory tests which do not replace practical tests. In case of changes in the parameters of the application, such as changes in substrates etc., or in case of a different application, consult Sika's Technical Service prior to using Sika products. The information contained herein does not relieve the user of the products from testing them for the intended application and purpose. All orders are accepted subject to our current terms of sale and delivery. Users must always refer to the most recent issue of the local Product Data Sheet for the product concerned, copies of which will be supplied on request.



Suitable for roof systems without slope

900_020910_910510601C_1901_en

SARNAFIL® TPO - GREEN ROOF SYSTEM - INTENSIVE
ON CONCRETE DECK WITH THERMAL INSULATION
 SF TPO - 051.06.01 - Scupper - Mechanically Fastened on Concrete Wall
 Sika General Detail. Template for translation.

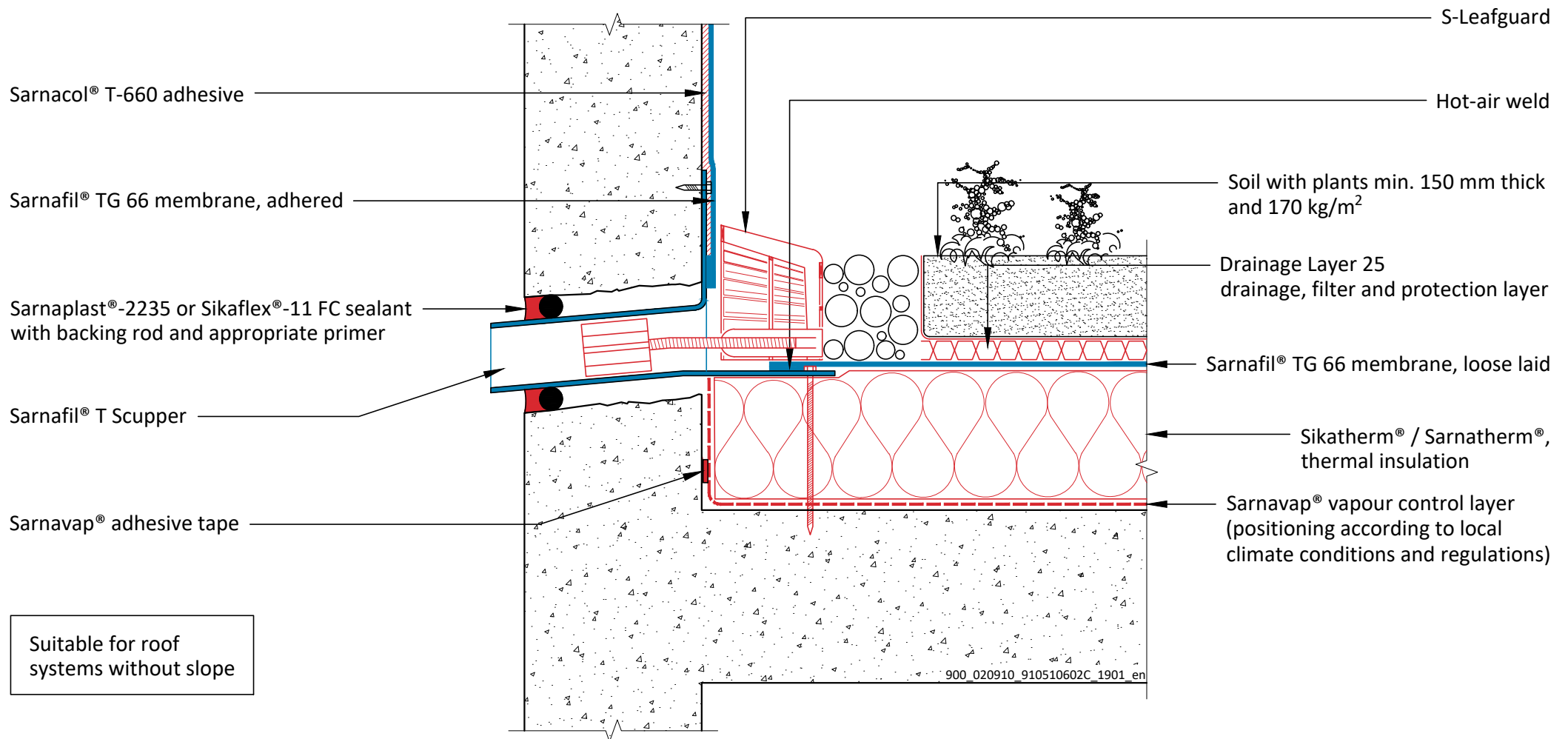
900_020910_910510601C_1901_en
 January 2019

Sika Services AG
 Tüffenwies 16
 8048 Zürich
 Switzerland
 Tel: +41 584364040
 www.sika.com

BUILDING TRUST



DRAWING MUST ALWAYS BE REVIEWED BY A DESIGN SPECIALIST AND IF NECESSARY MODIFIED TO ENSURE SUITABILITY FOR THE SPECIFIC APPLICATION
 The information contained herein and any other advice are given in good faith based on Sika's current knowledge and experience of the products when properly stored, handled and applied under normal conditions in accordance with Sika's recommendations. The information only applies to the application(s) and product(s) expressly referred to herein and is based on laboratory tests which do not replace practical tests. In case of changes in the parameters of the application, such as changes in substrates etc., or in case of a different application, consult Sika's Technical Service prior to using Sika products. The information contained herein does not relieve the user of the products from testing them for the intended application and purpose. All orders are accepted subject to our current terms of sale and delivery. Users must always refer to the most recent issue of the local Product Data Sheet for the product concerned, copies of which will be supplied on request.



Suitable for roof systems without slope

900_020910_910510602C_1901_en

SARNAFIL® TPO - GREEN ROOF SYSTEM - INTENSIVE ON CONCRETE DECK WITH THERMAL INSULATION
 SF TPO - 051.06.02 - Scupper - Adhered on Concrete Wall
 Sika General Detail. Template for translation.

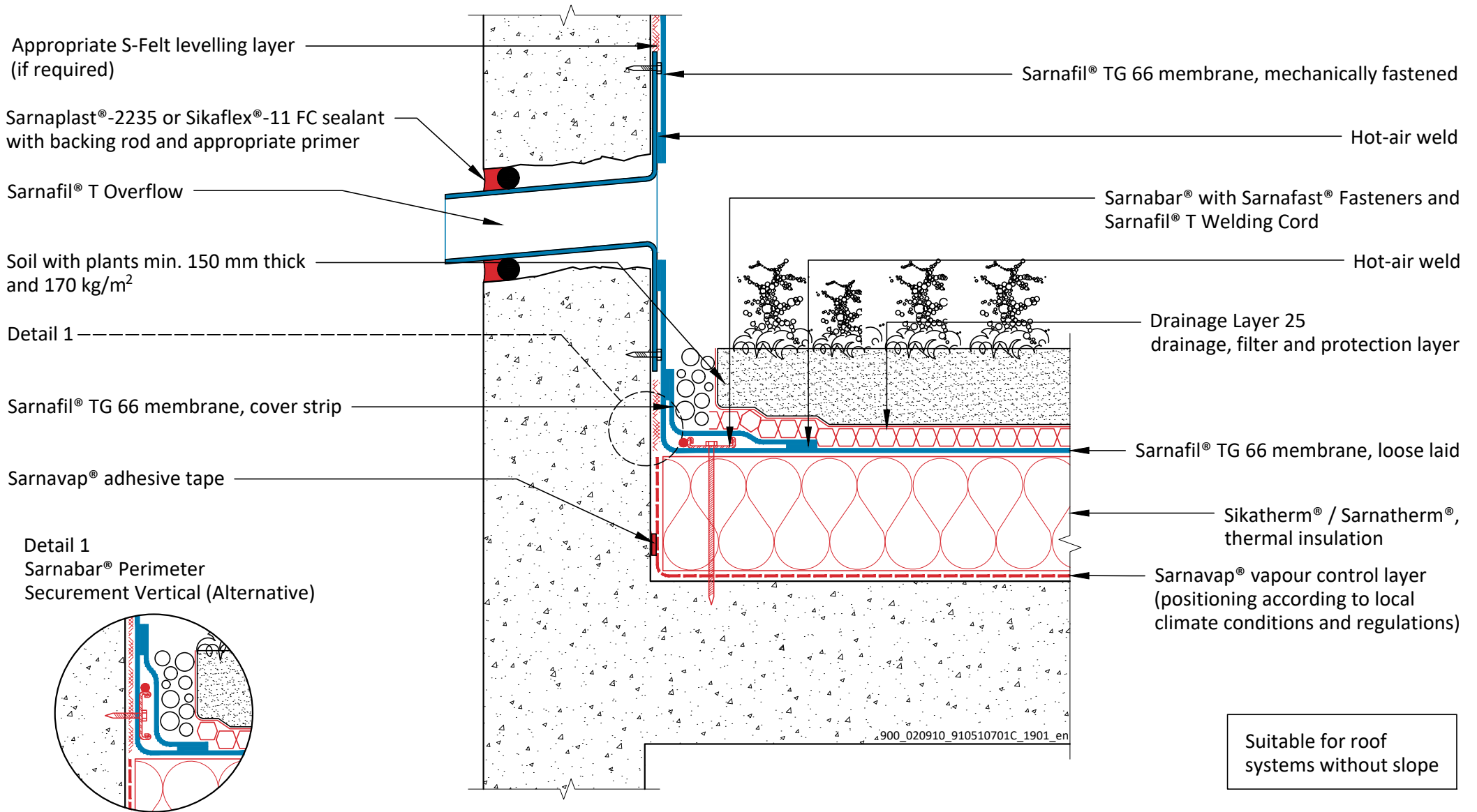
900_020910_910510602C_1901_en
 January 2019

Sika Services AG
 Tüffenwies 16
 8048 Zürich
 Switzerland
 Tel: +41 584364040
 www.sika.com

BUILDING TRUST



DRAWING MUST ALWAYS BE REVIEWED BY A DESIGN SPECIALIST AND IF NECESSARY MODIFIED TO ENSURE SUITABILITY FOR THE SPECIFIC APPLICATION
 The information contained herein and any other advice are given in good faith based on Sika's current knowledge and experience of the products when properly stored, handled and applied under normal conditions in accordance with Sika's recommendations. The information only applies to the application(s) and product(s) expressly referred to herein and is based on laboratory tests which do not replace practical tests. In case of changes in the parameters of the application, such as changes in substrates etc., or in case of a different application, consult Sika's Technical Service prior to using Sika products. The information contained herein does not relieve the user of the products from testing them for the intended application and purpose. All orders are accepted subject to our current terms of sale and delivery. Users must always refer to the most recent issue of the local Product Data Sheet for the product concerned, copies of which will be supplied on request.



Suitable for roof systems without slope

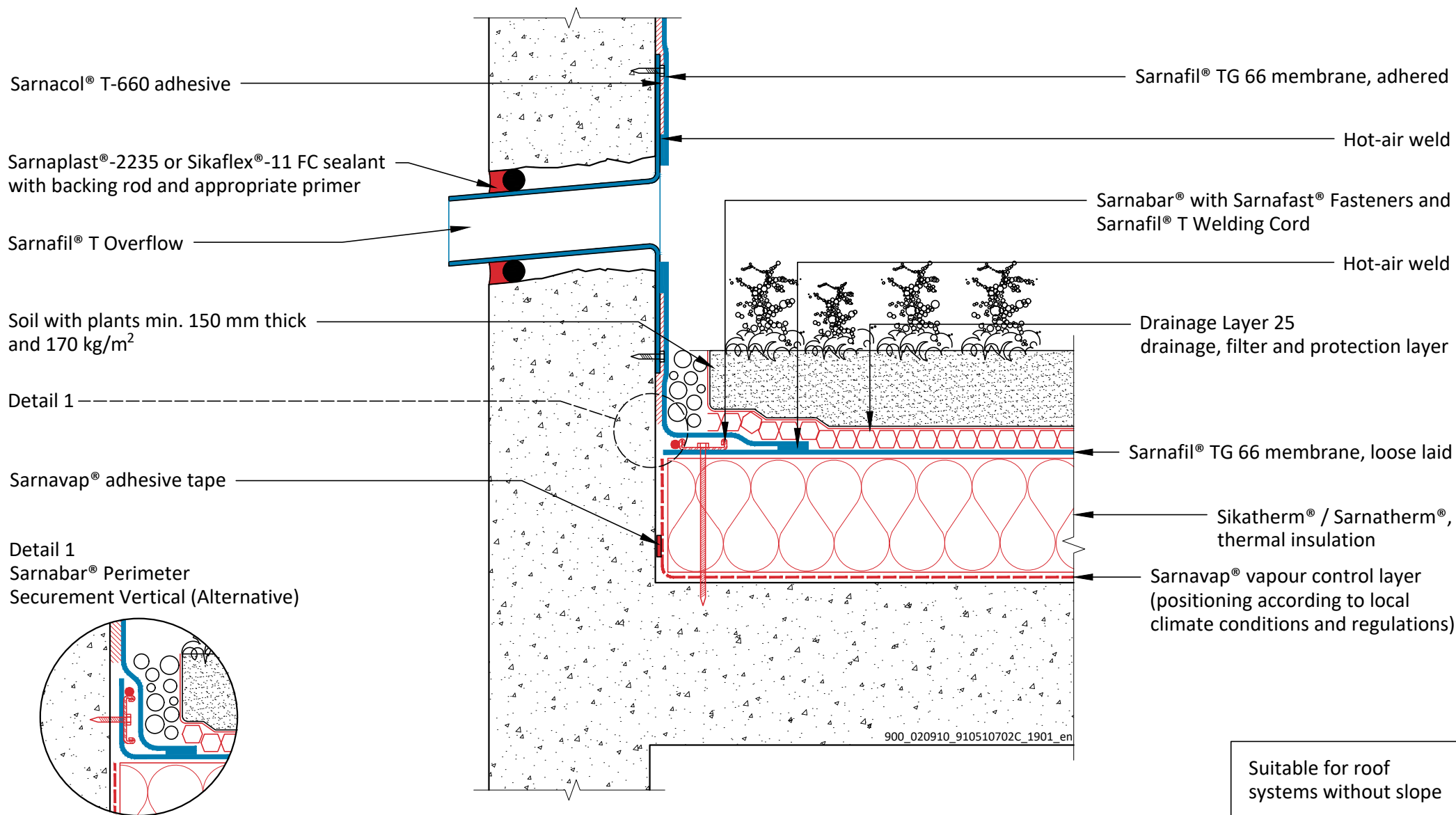
SARNAFIL® TPO - GREEN ROOF SYSTEM - INTENSIVE ON CONCRETE DECK WITH THERMAL INSULATION
 SF TPO - 051.07.01 - Overflow - Mechanically Fastened on Concrete Wall
 Sika General Detail. Template for translation.

900_020910_910510701C_1901_en
 January 2019

Sika Services AG
 Tüffenwies 16
 8048 Zürich
 Switzerland
 Tel: +41 584364040
 www.sika.com



DRAWING MUST ALWAYS BE REVIEWED BY A DESIGN SPECIALIST AND IF NECESSARY MODIFIED TO ENSURE SUITABILITY FOR THE SPECIFIC APPLICATION
 The information contained herein and any other advice are given in good faith based on Sika's current knowledge and experience of the products when properly stored, handled and applied under normal conditions in accordance with Sika's recommendations. The information only applies to the application(s) and product(s) expressly referred to herein and is based on laboratory tests which do not replace practical tests. In case of changes in the parameters of the application, such as changes in substrates etc., or in case of a different application, consult Sika's Technical Service prior to using Sika products. The information contained herein does not relieve the user of the products from testing them for the intended application and purpose. All orders are accepted subject to our current terms of sale and delivery. Users must always refer to the most recent issue of the local Product Data Sheet for the product concerned, copies of which will be supplied on request.



SARNAFIL® TPO - GREEN ROOF SYSTEM - INTENSIVE ON CONCRETE DECK WITH THERMAL INSULATION
 SF TPO - 051.07.02 - Overflow - Adhered on Concrete Wall
 Sika General Detail. Template for translation.

900_020910_910510702C_1901_en
 January 2019

Sika Services AG
 Tüffenwies 16
 8048 Zürich
 Switzerland
 Tel: +41 584364040
 www.sika.com



DRAWING MUST ALWAYS BE REVIEWED BY A DESIGN SPECIALIST AND IF NECESSARY MODIFIED TO ENSURE SUITABILITY FOR THE SPECIFIC APPLICATION
 The information contained herein and any other advice are given in good faith based on Sika's current knowledge and experience of the products when properly stored, handled and applied under normal conditions in accordance with Sika's recommendations. The information only applies to the application(s) and product(s) expressly referred to herein and is based on laboratory tests which do not replace practical tests. In case of changes in the parameters of the application, such as changes in substrates etc., or in case of a different application, consult Sika's Technical Service prior to using Sika products. The information contained herein does not relieve the user of the products from testing them for the intended application and purpose. All orders are accepted subject to our current terms of sale and delivery. Users must always refer to the most recent issue of the local Product Data Sheet for the product concerned, copies of which will be supplied on request.

Sarnaplast®-2235 or Sikaflex®-11 FC sealant and appropriate primer

Hot-air weld

Sarnafil® TG 66 membrane, loose laid

Sarnavap® adhesive tape

Stainless steel jubilee clip / shrinking hose

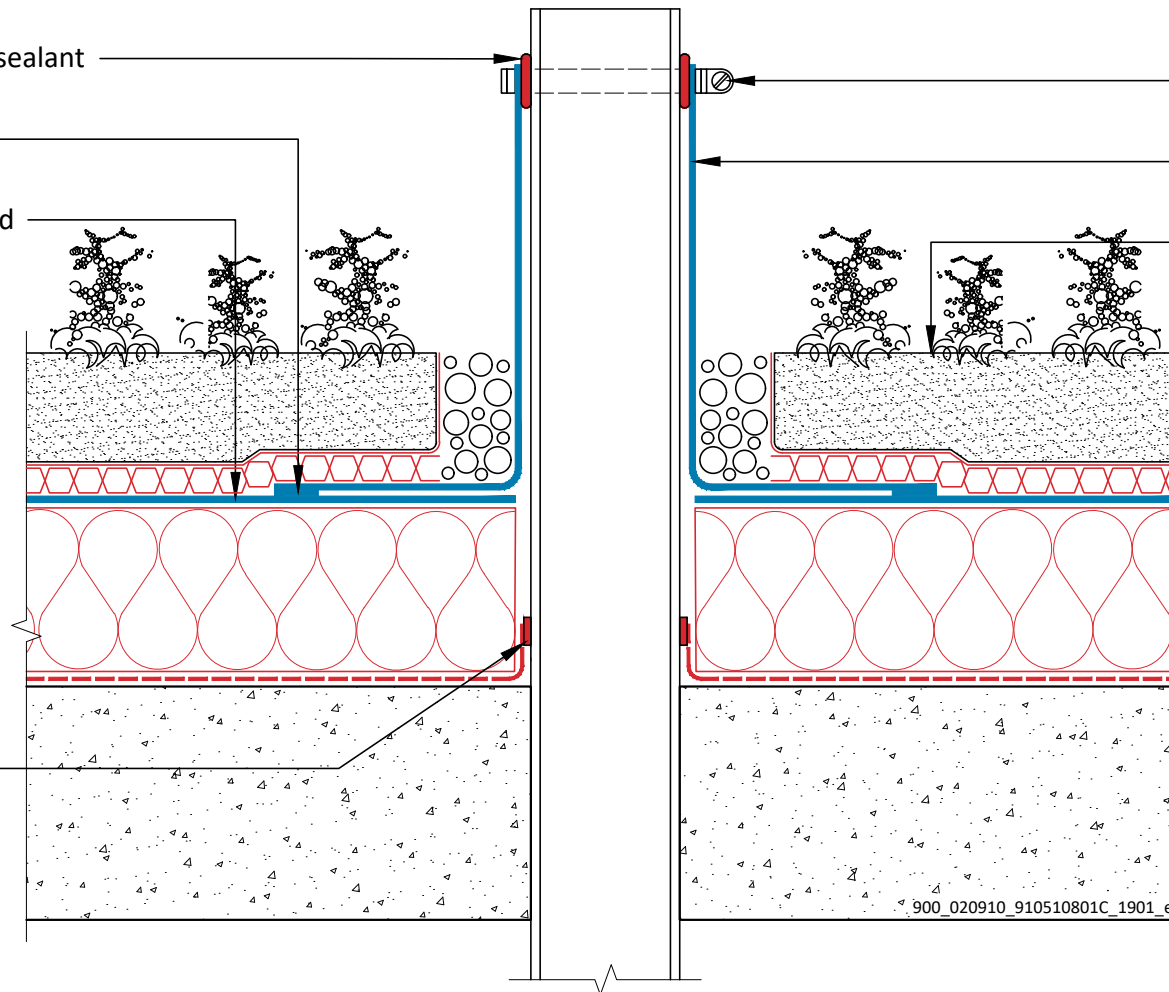
Sarnafil® T Pipe / Post Flashing

Soil with plants min. 150 mm thick and 170 kg/m²

Drainage Layer 25 drainage, filter and protection layer

Sikatherm® / Sarnatherm®, thermal insulation

Sarnavap® vapour control layer (positioning according to local climate conditions and regulations)



900_020910_910510801C_1901_en

Suitable for roof systems without slope

SARNAFIL® TPO - GREEN ROOF SYSTEM - INTENSIVE ON CONCRETE DECK WITH THERMAL INSULATION

SF TPO - 051.08.01 - Vent Pipe / Post

Sika General Detail. Template for translation.

900_020910_910510801C_1901_en
January 2019

Sika Services AG

Tüffenwies 16
8048 Zürich
Switzerland

Tel: +41 584364040

www.sika.com

BUILDING TRUST



DRAWING MUST ALWAYS BE REVIEWED BY A DESIGN SPECIALIST AND IF NECESSARY MODIFIED TO ENSURE SUITABILITY FOR THE SPECIFIC APPLICATION

The information contained herein and any other advice are given in good faith based on Sika's current knowledge and experience of the products when properly stored, handled and applied under normal conditions in accordance with Sika's recommendations. The information only applies to the application(s) and product(s) expressly referred to herein and is based on laboratory tests which do not replace practical tests. In case of changes in the parameters of the application, such as changes in substrates etc., or in case of a different application, consult Sika's Technical Service prior to using Sika products. The information contained herein does not relieve the user of the products from testing them for the intended application and purpose. All orders are accepted subject to our current terms of sale and delivery. Users must always refer to the most recent issue of the local Product Data Sheet for the product concerned, copies of which will be supplied on request.